

# How to Choose a Course and Uni

Making the right choice for you

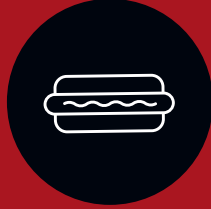
Stand for ambition  
**Kent.ac.uk**



# Contents:



Course Options



Sandwich Years



University  
Locations



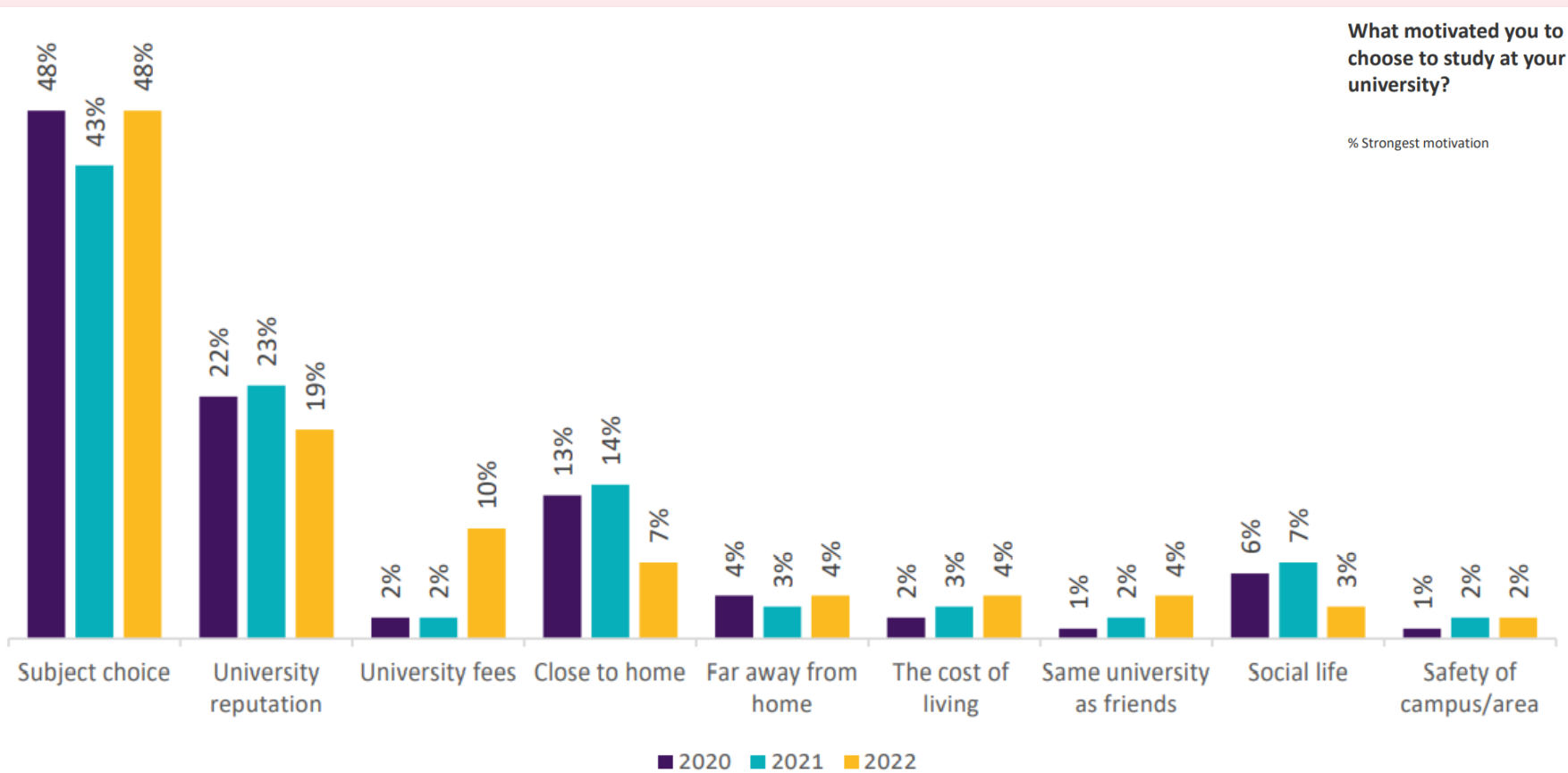
How to Research

# What's important to you?

- Course content?
- Location?
- Accommodation?
- Social Life?
- Advice from friends & family?
- Career prospects?
- Living costs?
- University ranking?



# How do people choose their university?



Base: N =2964 respondents;  
Regional Breakdown: London (989), Birmingham (100), Bristol (95), Manchester (94), Nottingham (93), Newcastle (88), Leeds (87), Glasgow (87), Liverpool (87), Oxford (86), Sheffield (84), Leicester (70), Cardiff (68), Exeter (67), York (61), Cambridge (54), Durham (49), Southampton (48), Coventry (32), Canterbury (31), Edinburgh (9).

Base: N =2964 respondents;  
City Breakdown: London (562), Birmingham (117), Cambridge (113), Coventry (113), Nottingham (111), Edinburgh (110), Southampton (110), Manchester (110), Newcastle (101), Bristol (100), Leeds (100), Sheffield (99), Liverpool (98), Glasgow (96), Oxford (86), Leicester (79), Durham (77), Cardiff (75), Exeter (73), York (70), Canterbury (56).

Most people will pick their subject first, then find out where they can go to study that

There are lots of other things to consider, and your priorities can change

There is no right or wrong answer when it comes to the most important factor

**What most excites you about the prospect of university?**

# What subjects can you study?

There are over 350 institutions and around 35,000 courses to choose from on UCAS

You don't have to take something that you've already studied in the past

Kent alone has over 200 courses to choose from

People will choose courses based on lots of different criteria, for example:

- Specific course content
- Entry requirements
- Academic facilities
- Careers prospects
- University reputation



# Course Content and Flexibility

University courses work very differently to A Level or GCSE courses

Studying a particular course varies greatly between institutions, with different topics covered or levels of choice available.

Some courses also offer you the chance to choose which topics you study within the course

Other courses might be more restrictive, requiring you to cover specific content in order to qualify e.g. Medicine, Social Work

## Birmingham



BA History 1<sup>st</sup> Year

### Compulsory Modules:

- Practising History (A): Skills in History
- Practising History (B): Skills in History
- Discovering the Middle Ages
- The Making of the Contemporary Modern World: Modern History c.1800 to the Present
- The History of Africa and its Diaspora
- The Making of the Modern World 1500-1800

### Optional Modules:

- People and Places A and B
- Or an approved foreign language module

## Kent



BA History 1<sup>st</sup> Year

### Optional Modules may include:

- Monarchy and Aristocracy in England 1460-1640
- Introduction to the History of Medicine
- The Emergence of America: From European Settlement to 1880
- The Rise of the United States Since 1880
- Early Medieval Europe
- Later Medieval Europe
- Victorian Britain: Politics, Society and Culture
- Revolutionary Europe 1700-1850
- The British Army and Society since 1660
- War and Society in Europe c.1779-1990
- Renaissance and Reformation 1450-1750
- A Global History of Empires: 1500-1850
- War and Diplomacy in Europe c.1850-2000
- Introduction to Military History (Part 1)
- Introduction to Military History (Part 2)

**Make sure you look at the course content in detail- don't assume based on the title!**

# How you'll learn

## How are you taught?

- Lectures
- Seminars
- Workshops
- Placements

Contact hours will vary between courses- some rely more on classes while others value independent study

Courses with lower contact hours will expect you to do more independent study

## Approximate contact hours per week:

<b>Medicine</b>	<b>35 hours</b>
<b>Forensic Science</b>	<b>23 hours</b>
<b>Law</b>	<b>21 hours</b>
<b>Psychology</b>	<b>17 hours</b>
<b>History</b>	<b>8 hours</b>

## How are you assessed?

- Essays
- Assignments
- Presentations
- Practical Work
- Exams



# Entry Requirements

Each university will have different grade or subject requirements for a place on their courses

This can be for various reasons, such as the university's reputation or course content.

Make sure to check around for the right entry requirements to fit your expected grades.

Universities set their entry requirements based on how demanding they feel the course is. Choosing a course with appropriate entry requirements is your interest as well.

## Comparison for BA History

### Kent



- A Levels: BBB
- Must include a Humanities based essay writing subject such as history, philosophy or English

### Birmingham



- A Levels: AAB
- Must include A Level History, Medieval History or Ancient History Grade A





# Contextual Offers

## Contextual Offers

- We take a rounded view of an applicant's achievements – making sure every applicant is considered fairly based upon their achievements and within the context of their experiences to date.
- You don't need to do anything extra – we get everything we need via your UCAS application!
- Contextual offers are up to 16 UCAS points lower than the University Standard Offer.

## Flexible Offers

- If you don't meet our Contextual Admissions eligibility\*, you may still be offered a 'Flexible Offer'
- Flexible offers are up to 8 UCAS points lower than the University Standard Offer. Applicants with predicted grades 16 UCAS points lower than the university standard offer, will be eligible for a flexible offer if they meet certain criteria.\*



\*Eligibility criteria and further information can be found on our website.

# Foundation Years

**Some universities may offer Foundation entry for certain courses**

This means taking an additional year of study at the beginning of the course with more introductory content

Lower average entry requirements (e.g BBB vs AAA)

No subject specific entry requirements

Foundation students still have access to student finance, accommodation and all the other elements of the student experience



# And there's more..

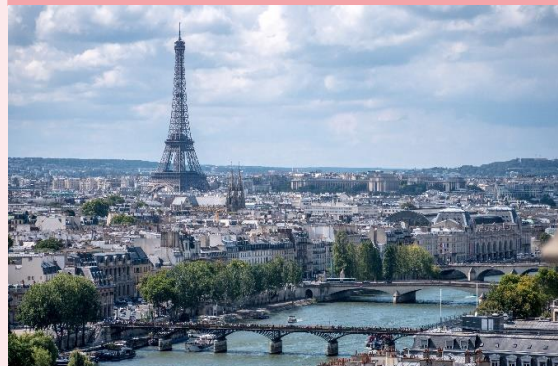
## Year Abroad

- Spend time studying overseas
- Experience other cultures
- Develop your skills and character



## Language Express

- Take part in one of our free language courses.
- Choose from languages such as Arabic, French, Japanese, German, Italian, Mandarin, Spanish, Russian and Ukrainian



## Year In courses

- Add an inter-disciplinary year in Data analytics, Computing, Management, TV and Online Broadcasting or a Language.
- Broaden your career prospects



## Placement Year

- Undertake a year of work experience
- Network with employers
- Broaden your skillset



# Study Support

**Making the jump from school/ college to degree level study can be daunting, but you will be supported the whole way**

Universities offer students a wide range of additional support for their studies- check what is available and how you will be supported on your course

Study skills sessions:

- Essay writing
- Maths & statistics
- Seminar participation
- Presentation skills

Online resources, 1-to-1 appointments or group sessions available

Academic Peer Mentoring schemes and 1-to-1 academic tutorials



# University Locations

---



# Key questions to consider...

Choosing a university isn't just about the course, your experience outside the classroom is just as important.

It's vital you consider the non-academic side of student life as well when.

- Do you want a campus or city university?
- What kind of social facilities do you want?
- Are there societies or sports team to join?
- What are the student support services like?
- Which kind of accommodation do you want?
- How far from home do you want to be?
- **Can you see yourself living there for three or four years?**



# Campus vs City Universities

Universities will typically be based on a campus, or spread around a city

- **Campus** – everything in one place
- **City** – everything spread around an area

Each model has advantages and drawbacks, depending on your preferences

Being a campus or a city university can have a big impact on the environment of the university and what it's like to live/study there.



# Campus University

University of Kent (Canterbury Campus)



Everything in one place



Exclusive university facilities



Self-contained student community



Easy to get around



Further from public facilities



Less integrated with the local area



# City University

Portsmouth (University buildings highlighted)

- + Greater Range of Locations
- + Easier access to public facilities
- + More integrated into city community
- + Better access to public transport hubs
- Harder to get around
- Less centralised student community



# Student Living

University offers many students the chance to move away from home for the first time

This can be a fantastic experience and has plenty of advantages

- Live close to your classes and university facilities
- Learn how to take care of yourself and live independently- develop everyday life skills
- Move into a supported environment where help is available from the university
- Live alongside students your own age and meet new people

**Remember that you don't have to move away for university though- some students prefer to remain at home and commute instead**



# Accommodation

Many universities have first years living on campus – check whether this is guaranteed and where you can live in subsequent years.

Most universities will offer different types of rooms and accommodation styles to suit various preferences or budgets

- Ensuite
- Shared bathroom
- Self-catered
- Part-catered

Prices will vary, but typically range from £5,000 – 10,000 per year



# Clubs & Sports Teams

- Societies and sports groups are a huge part of student life, with potentially hundreds to choose from at each university
- If you have existing interests, check where you can pursue these activities further
- Research what kind of activities you can take up- university is a great chance to try something new
- Information about social life and sports will typically be on the **student union's** website, not the university's



# Free Kent Sport membership for First Years

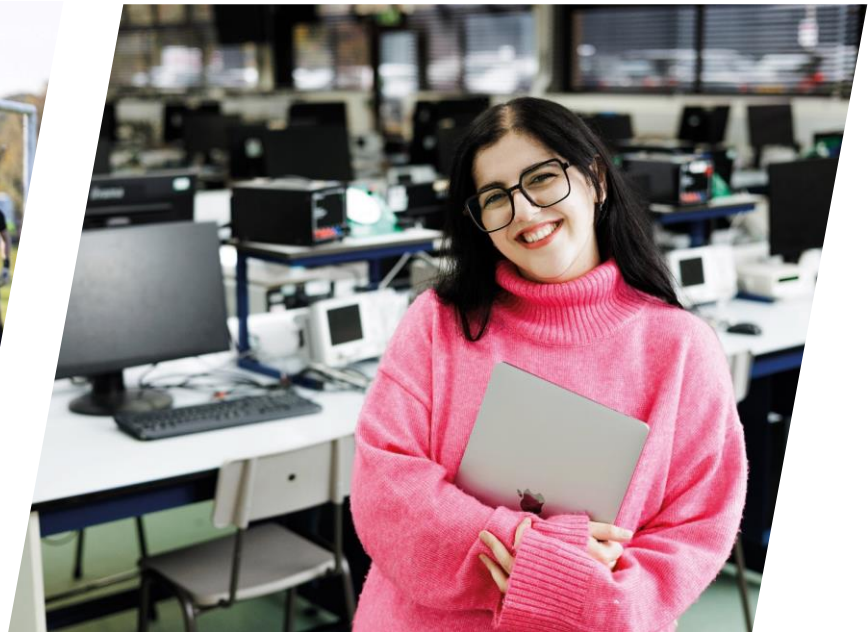
## CANTERBURY CAMPUS

### Kent Sport 'Premium Plus' membership:

- Extensive fitness suite
- Fantastic facilities including new 4 court indoor tennis arena, 3G pitches and more
- In person and virtual fitness and dance classes via Les Mills
- Recreational and competitive sports
- UNiversal gym membership
- BUCs entry
- Discounted physio services at the campus clinic
- Advance online booking for classes and facilities
- All this and more is worth £195 PA



# Other financial support



## Scholarships

Rewards outstanding academic, sporting or musical achievement

## Bursary

Awards based on personal circumstances, background or future career

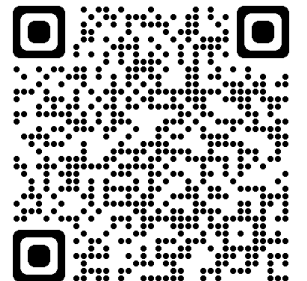
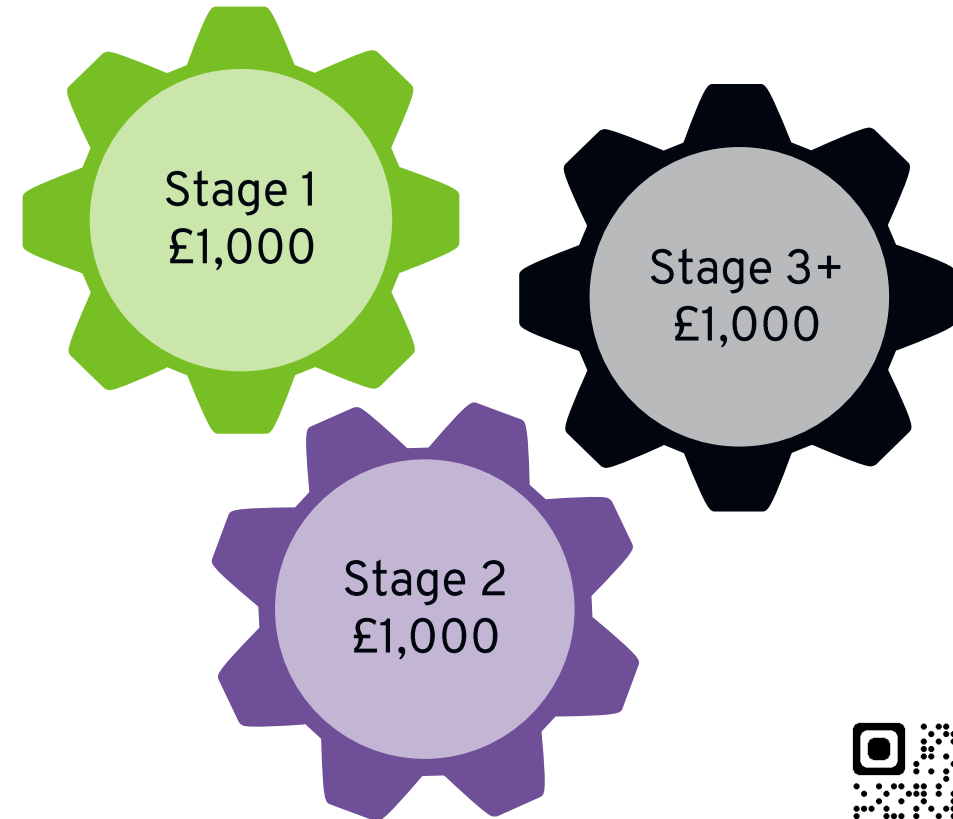
# Kent's Financial Support Package 2024

The University offers a generous financial support package for the duration of your degree.

Kent has a minimum **£3,000 financial support** package for 2024 across three stages of full-time study, or more for course over three years.

## Who is eligible?

- Those whose household incomes fall below £30,000 per year and who satisfy other financial eligibility criteria (eg, state educated, care leavers, DSA recipients).
- Full information on the 2024 package is published on our website:  
[www.kent.ac.uk/guides/kfsp](http://www.kent.ac.uk/guides/kfsp)



# Students Unions

- Exist independently of the university
- Facilitate a lot of the non-academic side of student life.
- Research Student Unions to get an idea of social life at each uni.
- Unions provide all kinds of support and services, from social activity to financial advice





# Student Support

University offers a supportive environment with teams of professionals to help with everything from personal and mental wellbeing to practical, everyday issues.

Check what kind of help a university can offer you, especially if you already think you might need further support

- Support with sensory impairments, specific learning difficulties, mobility difficulties, social/communication difficulties
- Support for students experiencing distress arising from psychological, emotional or mental health issues
- Residential Life Assistants
- Peer support groups
- Life skills workshops
- Therapy Dogs
- Stress management
- Financial Advice
- Counselling services
- Autism support



# AMBITION CLUB

University of  
**Kent**

The Ambition Club kickstarts your university life - giving you a range of benefits to support you throughout your application and to set you up for the best student experience possible

- **Accommodation guarantee** - get your first-choice accommodation style when you accept an offer and apply for accommodation by 31 March 2025
- **1-2-1 admissions support** to guide you through your application and answer any questions you may have
- **Make connections before you start** - invitation to a series of events, so you can prepare yourself and make friends before you start

And lots more!



# Ambition to Succeed

## What is Ambition to Succeed?

This free programme is designed to help young people from Kent and Medway explore both the academic and social side of university life and runs throughout Years 12 and 13.

You will also be part of an enrichment programme whilst studying at Kent and will be eligible for a scholarship worth between £500-£2,000 for each year of undergraduate study at the University of Kent.



## Eligibility

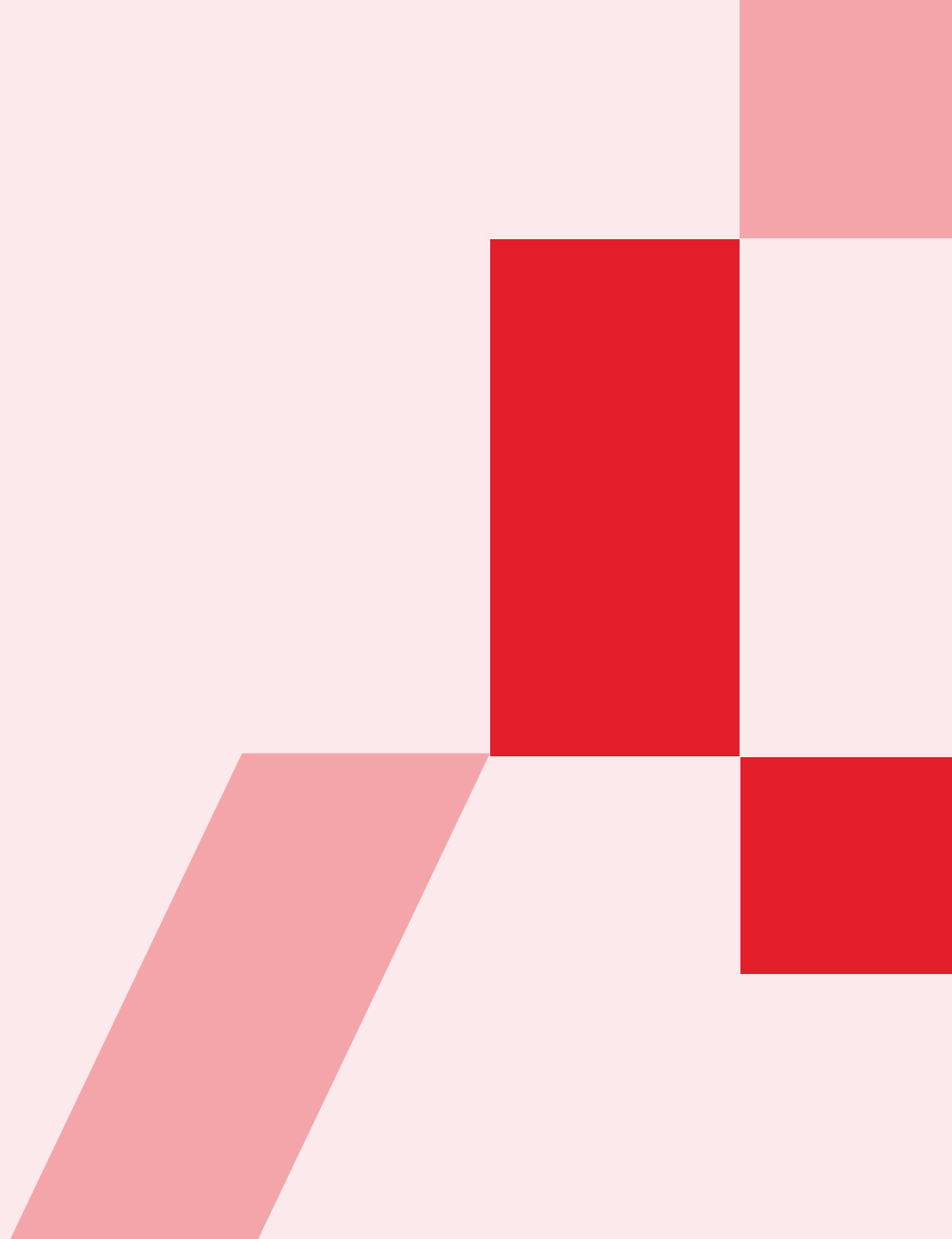
All interested Year 12 or FE Year 1 students can apply. Priority is given to those who meet more than one of the following criteria:

1. Live in an area deemed to have lower than expected participation in Higher Education
2. Have achieved 5 GCSEs at grades 9-4 including Maths and English
3. You are eligible to receive Free School Meals
4. Your parent(s)/guardian(s) did not attend university
5. You are from a group which is under-represented in Higher Education. (See website for further information)

Deadline for applications: 14 February 2025



# How to research universities



# Before you start- what are you looking for?

- Course content?
- Location?
- Accommodation?
- Teaching quality?
- Career prospects?
- Living costs?
- University ranking?
- Social life?

There are lots of measures used to assess universities

Work out which factors are most important to you and then look up the statistics for those areas

E.g. If job prospects are important for you, check what percentage of graduates go on to work or further study.



# Courses – things to look out for

The screenshot shows the University of Kent website for the 'Film with a Placement Year' course. The page features a navigation bar with links like 'Courses', 'Student life', and 'Applying'. The main content area includes a course overview, a 'Key information' sidebar, and a 'Why study Film at Kent?' section with three sub-panels: 'Your degree. Your way.', 'Top 10' ranking, and 'From Kent to California.' testimonial.

University of Kent Undergraduate courses

Courses Student life Your future Applying Fees and funding Visit us Student profiles Parents More

Undergraduate BA (Hons)  
**Film with a Placement Year**  
Find your vision as a filmmaker and critic. Explore the history of film and create its future.

Apply now Stay updated

Options Choose an option Starting 2023 Typical offer BBB View all

### Course overview

Explore film from its silent beginnings through to CGI blockbusters, taking in avant-garde and international cinemas on your way, and find your own voice as a critic and a filmmaker.

Kent has been at the forefront of developing film as an academic subject for over 30 years and we continue to innovate in our teaching and practice. You'll be taught by practitioners and researchers whose work contributes to contemporary debate. Their expertise means that you have a wide choice of areas to discover.

Your placement year usually takes place between your second and final year of study, and can be either paid work or an internship. Taking a placement year increases your professional contacts and gives you the chance to gain some knowledge of the work environment, acquire new skills, and develop your confidence.

### Key information

UCAS code  
UCAS W611

Study mode  
**Full-time**

Duration  
**4 years full-time**

Location  
**Canterbury**

Also available with  
Year Abroad  
Placement Year

### Why study Film at Kent?

**Your degree. Your way.**  
From Hollywood to horror, location scouting and screenwriting to film sound, you can follow your passions. Theory or Practice? You can do both!

**Top 10**  
We're ranked 7th in The Guardian University Guide 2023.

**From Kent to California.**  
Recent Film graduate Massimiliano Folgheraiter describes how his experiences at Kent helped him to secure a place on a film production course in LA.

Find out more

- Module choices and details
- Specific subject requirements
- Foundation entry options
- Year Abroad and Year in Industry options
- Professional body accreditations
- Testimonials
- Graduate destinations and employability information

# League tables

Universities in the UK and all around the world are ranked each year by various organisations. This can give a good overview of a universities quality, but there are important points to bear in mind:

- Don't rely on just one league table
- Don't just look at an overall university score, look at specific subjects and departments
- Check rankings based on your own important criteria
- Forget your preconceptions about different universities

QUICK VIEW		FULL TABLE				
University ranking	University name	Overall score	Entry standards	Student satisfaction	Research quality	Graduate prospects
1	<a href="#">University of Cambridge</a> VIEW COURSES →	100%	98%	n/a	88%	93%
2	<a href="#">University of Oxford</a> VIEW COURSES →	97%	97%	n/a	87%	92%
3	<a href="#">London School of Economics and Poli...</a> VIEW COURSES →	95%	92%	77%	88%	91%
4	<a href="#">University of St Andrews</a> VIEW COURSES →	94%	100%	83%	83%	90%
5 ▲ 1	<a href="#">Imperial College London</a> VIEW COURSES →	90%	97%	79%	91%	94%
6 ▲ 1	<a href="#">Loughborough University</a> <small>IN CLEARING</small> VIEW COURSES →	89%	76%	80%	83%	87%
7 ▲ 1	<a href="#">Durham University</a> <small>IN CLEARING</small> VIEW COURSES →	89%	87%	77%	83%	89%
8 ▼ 3	<a href="#">University of Bath</a> <small>IN CLEARING</small> VIEW COURSES →	88%	85%	79%	83%	91%



# Research tools



UCAS website interface with navigation tabs: Discover, Undergraduate, Postgraduate, Apprenticeships. A search bar is present. Below the navigation, there are several promotional cards: 'STAND TILL', 'Discovery exhibitions 2023', 'GET UPDATES FROM UCAS', and 'FIND AN APPRENTICESHIP'.



University of Kent website for 'Undergraduate courses'. It features a search bar 'Find your course' and a 'Filter by' section with options for subject categories, locations, study modes, and course options. Several course cards are visible, including 'Accounting and Finance - BSc (Hons)', 'Advanced Legal Practice - MLaw', and 'UKCAGS'.

Websites

University of Kent website for 'Find a student group'. It includes a search bar and a grid of student societies such as 'Respect The NB', 'UKCAGS', 'Ahilbayt Society', 'ARAB SOCIETY', 'UHCO', and 'TEAM KENT'.

University of Kent 'UNDERGRADUATE PROSPECTUS 2024' cover featuring a woman in a red dress and the slogan 'WE STAND FOR AMBITION'.

Prospectus

University of Kent > Courses > Visit Kent > Canterbury Undergraduate Open Day

**Nov 18** **Canterbury Undergraduate Open Day**

**Dates and times**  
Sat 18 Nov  
10:00 - 14:00

**Open to**  
Potential undergraduates and their families and supporters

**Who to contact**  
Recruitment and Events Team  
[opendays@kent.ac.uk](mailto:opendays@kent.ac.uk)

Open Days

The Student Room website interface. It features a search bar and a 'Join now in 30 seconds' sign-up form. Below, there is a post from 'UK University Community' with a 'Join' button.

Student Forums

TikTok screenshot showing a video from 'lancaster university' with 101M views. The video content includes the text 'Join our world' and 'Canterbury | Medway | Brussels | Paris'.

Social Media

University of Kent YouTube channel interface. It shows a video titled 'Join our world' with a 'SUBSCRIBE' button and a 'PLAY ALL' button.



# Open days and campus tours

University of Kent > Events > Canterbury Open Day

Jul  
6

## Canterbury Open Day



Discover your place at our Open Day

### Dates and times

Sat 6 Jul  
10:00 - 14:00

### Open to

Potential undergraduates and postgraduates. Families and supporters are also very welcome.

### Who to contact

Recruitment and Events Team  
[opendays@kent.ac.uk](mailto:opendays@kent.ac.uk)

### Book a campus tour



Feb 23  
Canterbury Campus Tour  
[Read more](#)



Feb 26  
Medway Campus Tour  
[Read more](#)



Feb 28  
Canterbury Campus Tour  
[Read more](#)



Mar 2  
Canterbury Campus Tour  
[Read more](#)



Mar 7  
Medway Campus Tour  
[Read more](#)



Mar 7  
Canterbury Campus Tour  
[Read more](#)



Mar 9  
Canterbury Campus Tour  
[Read more](#)



Mar 14  
Medway Campus Tour  
[Read more](#)

Open-days and campus tours represent the best resources for university research

- See facilities in-person
- Tour the accommodation
- Talk to staff and students
- Visit the local area
- Experience the journey there and back

Open-days are free to attend and take place throughout the year

Visit [opendays.com](https://www.kent.ac.uk/opendays.com) for a full list of all university open-days

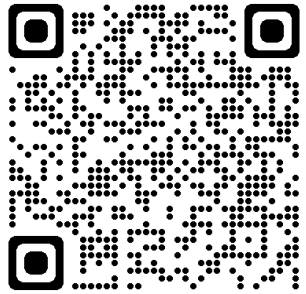
[www.kent.ac.uk/visit](https://www.kent.ac.uk/visit)

# Conclusion

- **Don't just look at course titles** - look at what is taught and how
- **Remember that university isn't just about studying** - you may also be living there for 3-4 years
- **Think about non-academic criteria** - consider the support available and opportunities outside your course
- **Don't rush** - take your time to research and visit the university if you can to build a sense of what it's really like.
- **Trust your instincts** - this is ultimately your decision, so make sure you choose the option you feel happiest about.



# Visit our campus

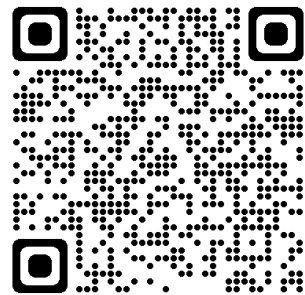


## CAMPUS TOURS

Medway  
Tuesdays  
Canterbury  
Thursdays

## OPEN DAYS

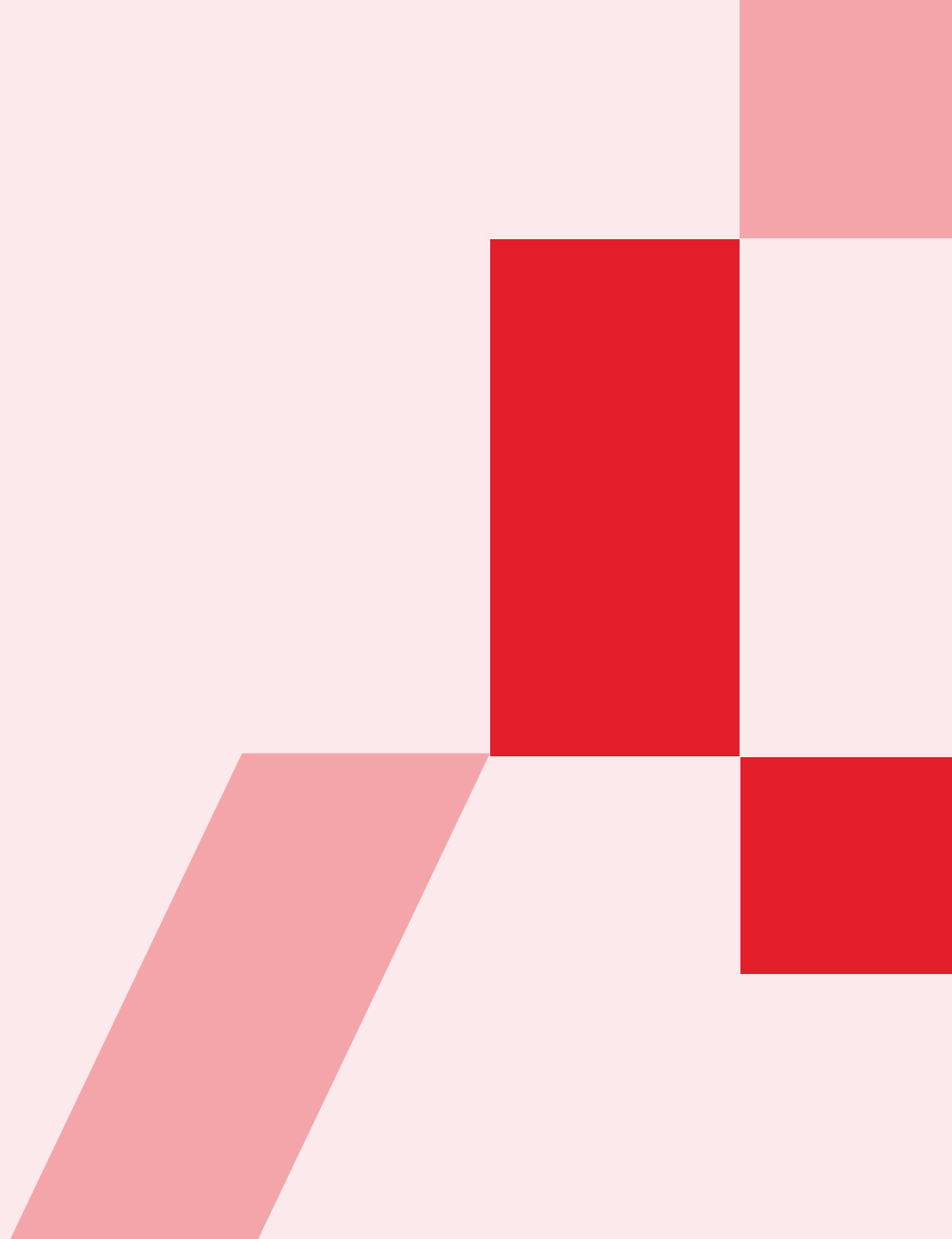
Canterbury  
Saturday 26 April 2025  
Saturday 5 July 2025  
Medway  
Saturday 21 June 2025



Find out more:  
[www.kent.ac.uk](http://www.kent.ac.uk)



# QUESTIONS?



This presentation was updated in June 2023. The University of Kent makes every effort to ensure that the information contained in its publicity materials is fair and accurate and provide educational services as described. However, the courses, services and other matters may be subject to change. For the most up-to-date information see [www.kent.ac.uk/ug](http://www.kent.ac.uk/ug) Full details of our terms and conditions can be found at [www.kent.ac.uk/termsandconditions](http://www.kent.ac.uk/termsandconditions)